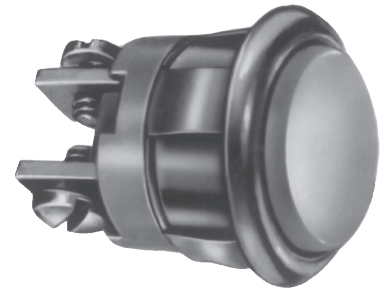


Low Voltage Industrial Push Buttons

Panel Mount

620 Series



Low voltage, panel mount push buttons with large terminals. Available with an illuminated center for use in unlighted areas.

Use for low voltage, low cost, industrial and commercial applications requiring long life. May be used with the Cat.No. 147-1 mounting plate (page 10-11) or 147-10 room annunciator mounting plate (page 14-8).

Polished chrome or brass
 Insulated for mounting on metal cabinets
 Snap fit

Contact ratings:
 8V: 2 amps AC, 2 amps DC
 24V: .67 amps AC, .5 amps DC
 48V: .3 amps AC, .3 amps DC
 Mounting hole dia: 5/8" (16mm)
 Mounting hole depth: 3/4" (19mm)
 Normally open momentary contacts

| Cat. No. | Volts | Finish | |
|----------|--------------|--------|---------------|
| | | Rim | Center |
| 620 | 8V AC or DC | Chrome | Ivory |
| 621* | 24V AC or DC | | |
| 620-B | 48V AC or DC | Brass | Ivory |
| 621-B* | | | |
| 620-L | 6-16 V AC | Chrome | Lighted Ivory |
| 620-LB | | Brass | Lighted Ivory |

*500 unit bulk pack